

Installation Instructions to add 3rd blocking diode to #1 Negative.

Parts supplied: Blocking diode on aluminum heatsink and mounting screw.

Tools needed: Drill w/ 3/16" bit, 7/16" wrench, 3/8" wrench, 5/16" wrench and screw driver.

Picture 1: This is a view of the backside of the panel showing how the rectifier is set up now.

Picture 2: Drill a 3/16" hole about 3/4" to the left of shunt #3.

Picture 3: Unbolt the diode heatsink between shunt #2 & shunt #3.

Picture 4: Move diode heatsink to the left of shunt #3 and bolt it to the panel. Note diode should be pointing toward shunt #3. Also you will have to loosen the pigtail on the diode and point it slightly up and re-tighten.

Picture 5: Unbolt the diode heatsink between shunt #1 & shunt #2.

Picture 6: Move diode heatsink to the left of shunt #2 and bolt it to the panel. Note diode should be pointing toward shunt #2. Also you will have to loosen the pigtail on the diode and point it slightly up and re-tighten.

Picture 7: Install new larger blocking diode and heatsink to the left of shunt #1. Note diode should be pointing toward shunt #1.

Picture 8: Make sure all the heatsinks are tight to the panel.

Picture 9: Remove wires that attach to shunt #1 except the short 3"-4" long DC lightning arrestor wire. That one can stay on shunt #1.

Picture 10: Connect the wires that were removed from shunt #1 and attach them to the 1/4" stud on the diode heatsink to the left of shunt #1.

Picture 11: Make sure this connection is tight.

Picture 12: Attach diode pigtail to shunt #1 where the other wires were removed.

Picture 13: Make sure this connection is tight.

Picture 14: This is how it should look when you are done.

Double check all electrical connections to make sure they are tight and place rectifier back into service.

+

243310

A circular black terminal block with two gold-colored pins. A white sticker with a '+' sign is at the top left, and another with the number '243310' is at the bottom center.

+

244002

A circular black terminal block with two gold-colored pins. A white sticker with a '+' sign is at the top left, and another with the number '244002' is at the bottom center.

+

243310

A circular black terminal block with two gold-colored pins. A white sticker with a '+' sign is at the top left, and another with the number '243310' is at the bottom center.

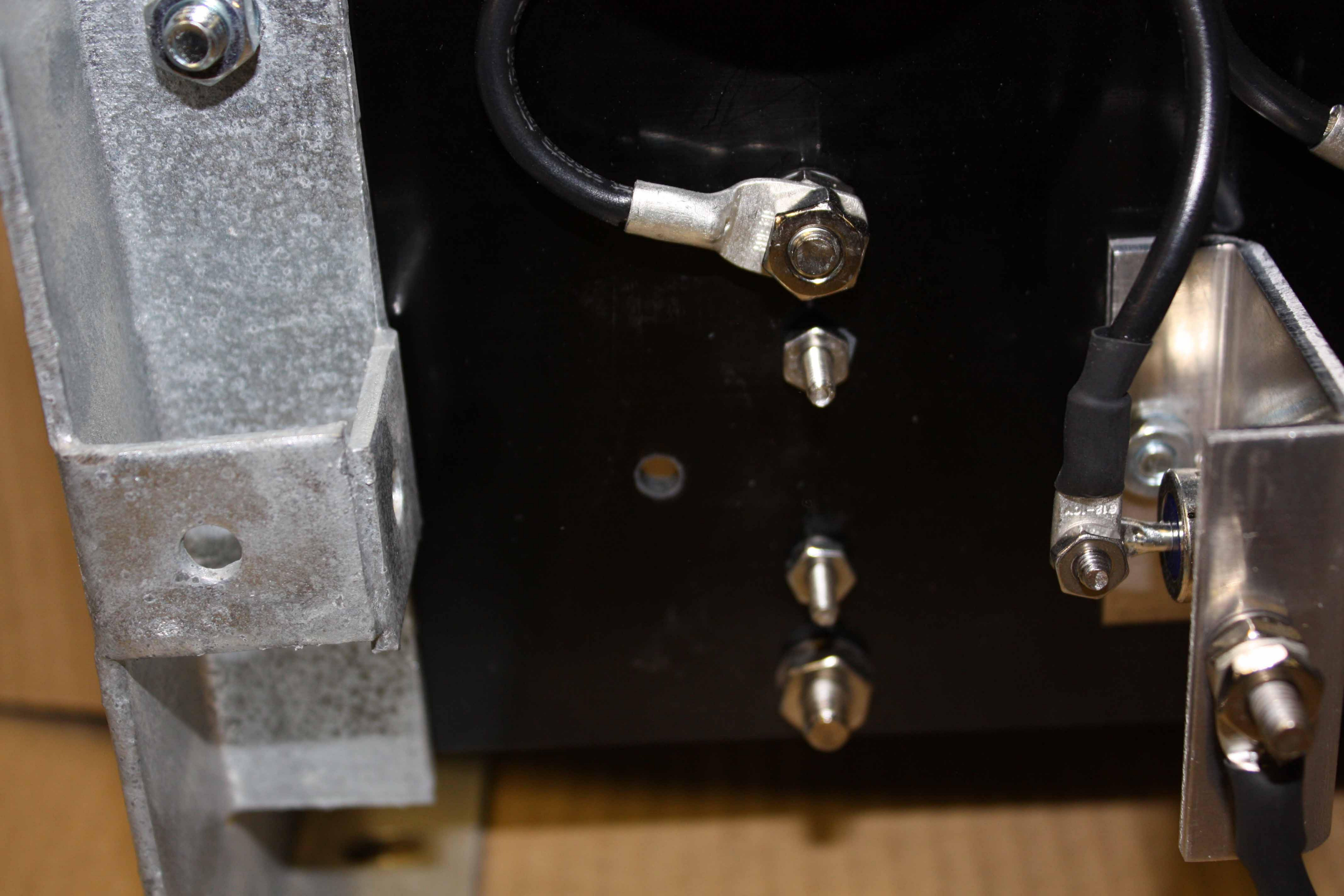
A vertical aluminum mounting bracket with a hex nut at the top and a hole near the bottom. It is attached to the main panel.

A terminal block with a cable connected to the top pin. Below it are three more pins.

A terminal block with a cable connected to the top pin. Below it are three more pins.

A terminal block with a cable connected to the top pin. Below it are three more pins.

A terminal block with a cable connected to the top pin. Below it are three more pins.





24N022

24N022

CRAFTSMAN

100-3011

100-3011



+

+

243310

244002

2



243310

244002



+

243310

+

244002

+

243310





+

243310

+

244002

+

243310



+

243310

+

244009

+

243310

7/16

1/2"



+

243310

+

244009

+

243310

+

243310

A circular black terminal block with two brass pins protruding from the top. A white sticker with a black '+' sign is positioned above the pins, and another white sticker with the number '243310' is below them.

+

244002

A circular black terminal block with two brass pins protruding from the top. A white sticker with a black '+' sign is positioned above the pins, and another white sticker with the number '244002' is below them.

243310

A partial view of a circular black terminal block with two brass pins protruding from the top. A white sticker with the number '243310' is visible below the pins.

ACE Pro Series

7/16

A hand is holding a silver metal wrench. The wrench has 'ACE Pro Series' engraved on the handle and '7/16' on the head. The wrench is positioned vertically, with the head at the bottom and the handle extending upwards.

A rectangular aluminum mounting plate with a bolt and nut. The plate is part of a larger assembly and is positioned on the left side of the image.

A terminal block with a cable connection. The cable is black and has a braided shield. The terminal block is mounted on a metal plate.

A terminal block with a cable connection. The cable is black and has a braided shield. The terminal block is mounted on a metal plate.

A terminal block with a cable connection. The cable is black and has a braided shield. The terminal block is mounted on a metal plate.

A terminal block with a cable connection. The cable is black and has a braided shield. The terminal block is mounted on a metal plate.

A terminal block with a cable connection. The cable is black and has a braided shield. The terminal block is mounted on a metal plate.

A terminal block with a cable connection. The cable is black and has a braided shield. The terminal block is mounted on a metal plate.

A terminal block with a cable connection. The cable is black and has a braided shield. The terminal block is mounted on a metal plate.



+

243310

+

244002

+

243310



243310

244009

243310



+

243310

+

244009

+

243310

+

+

+

+

+

+

+

KVM OR TRIM OFF